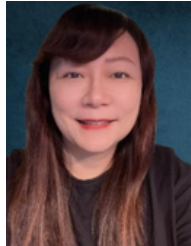




Panelist 1

Min-Hsun Liao
Tunghai University

Min-Hsun Liao is an Associate Professor in the Department of Foreign Languages and Literature at Tunghai University, Taiwan. She is serving as the Chief International Officer overseeing the university's internationalization and being involved in several language-related projects. She has been a local advisor to Fulbright English Teaching Assistants since 2013. Her research interest includes technology-enhanced language learning, telecollaboration, language teacher education, and bilingual education in Taiwan. She has published articles in *Teaching and Teacher Education*, the *Journal of Research in Reading*, *Curriculum & Instruction Quarterly*, the *Journal of Taiwanese Language and Literature*, and so on.



Panelist 2

Ya-Chen Chien
National Taipei University of Education

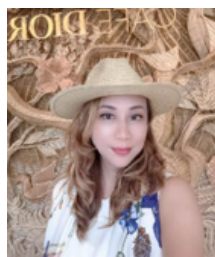
Dr. Jane Chien is an Associate Professor at National Taipei University of Education, specializing in digital learning, teacher education, and bilingual education. Her work focuses on designing engaging and equitable EFL environments through technology-enhanced pedagogy. As Principal Investigator of several Ministry of Education-funded projects, she led the Bilingual Digital Learning Companion Program and currently directs the AI D+ program, preparing pre-service teachers for remote bilingual instruction. She also supports national initiatives such as Cool English and TestMyEnglish, expanding access to CEFR-aligned digital assessment. She serves as TESOL International Association's Digital Learning and Technologies Strand Coordinator and an Electronic Village Online (EVO) Coordinator.



Panelist 3

Cheng-Chi Lai
National Chung Hsing University

Cheng-Ji (Paul) Lai is an Associate Professor at the Language Center of National Chung Hsing University, Taiwan. His recent research spans two interrelated domains. The first examines technology-enhanced language learning (TELL) in elementary CLIL classrooms, investigating how immersive virtual reality, generative AI (including IVR + GAI designs), adaptive learning platforms, board games, and hands-on activities support students' acquisition of target vocabulary, content knowledge, multimodal literacy, and written and oral scientific performance. The second focuses on CLIL teacher education, exploring how pedagogically grounded professional development in science and music enhances pre-service and in-service teachers' pedagogical content knowledge, bilingual instructional competence, and classroom practice.



Panelist 4

Ching-Ying Lin
National Pingtung University

Dr. Ching Ying Lin is Deputy CEO of the Digital Transformation Center and a faculty member in the Applied English Department at National Pingtung University. She holds an Ed.D. in Bilingual Education from Texas A&M University and a Certificate in EMI from Teacher College, Columbia University in the USA. Dr. Lin specializes in EMI, multilingual education, digital learning ecosystems, and technology-enhanced language teaching. Her research focuses on curriculum design, tutor scaffolding, and integrating digital tools to enhance accessibility, learner engagement, and cross-cultural competence. She has led large-scale initiatives engaging over 600 students, developing structured tutor training, digital scaffolding, and cloud-based collaborative platforms to support effective multilingual education.